

Wool growing sheep in Australia

Many breeds of sheep are farmed in Australia. Some breeds or types of sheep are farmed for wool. Merinos are the most common wool sheep in Australia and are famous all around the world for their beautiful fine wool.



BAHHH!

Merinos grow heavy fleeces of fine, white, soft wool.



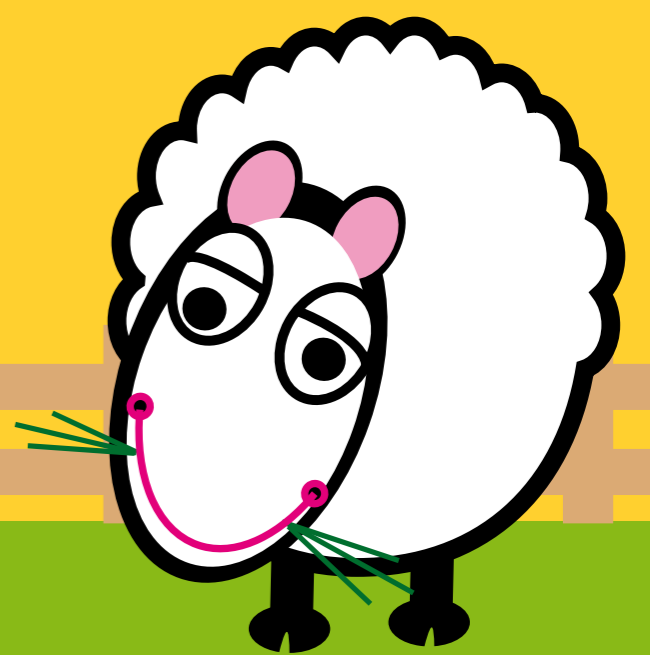
We are Merino rams (boys) see our curly horns.

Fine means very thin. One fibre of wool is thinner than one of the hairs on your head!



We are Merino ewes (girls).

Other wool breeds include:



Polwarth



Corriedale



Crossbred

